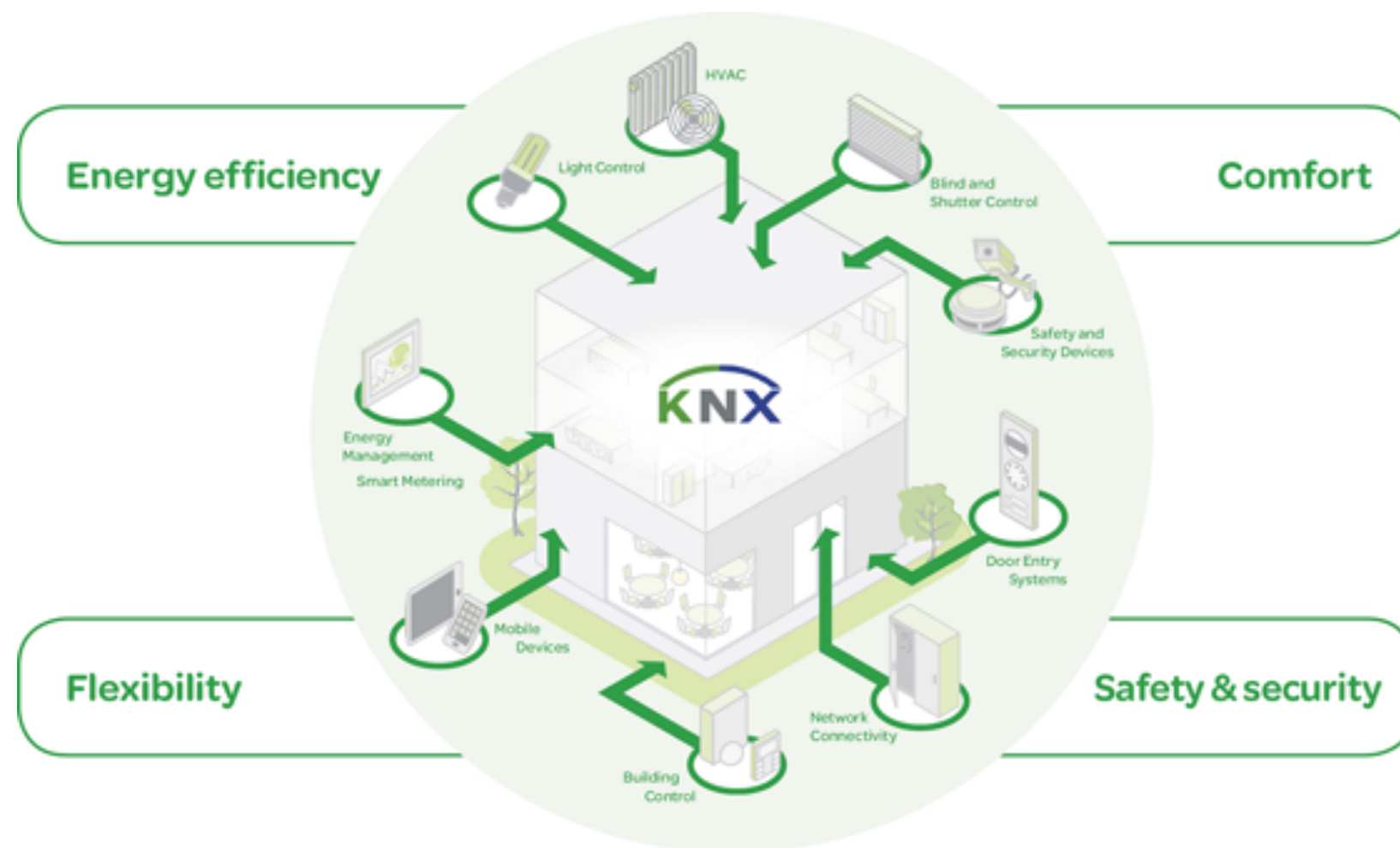


The EMBS **hotel solution**

based on world-widely used standard **KNX/EIB**



by **LogicMachine** Foundation

KNX is the worldwide standard for Home & Building Automation for 25 years, **effectively usable in all types of buildings** with multiple advantages

In particular,
LogicMachine Reactor
based solution is
perfectly scalable
from small B&B hotels to
resorts



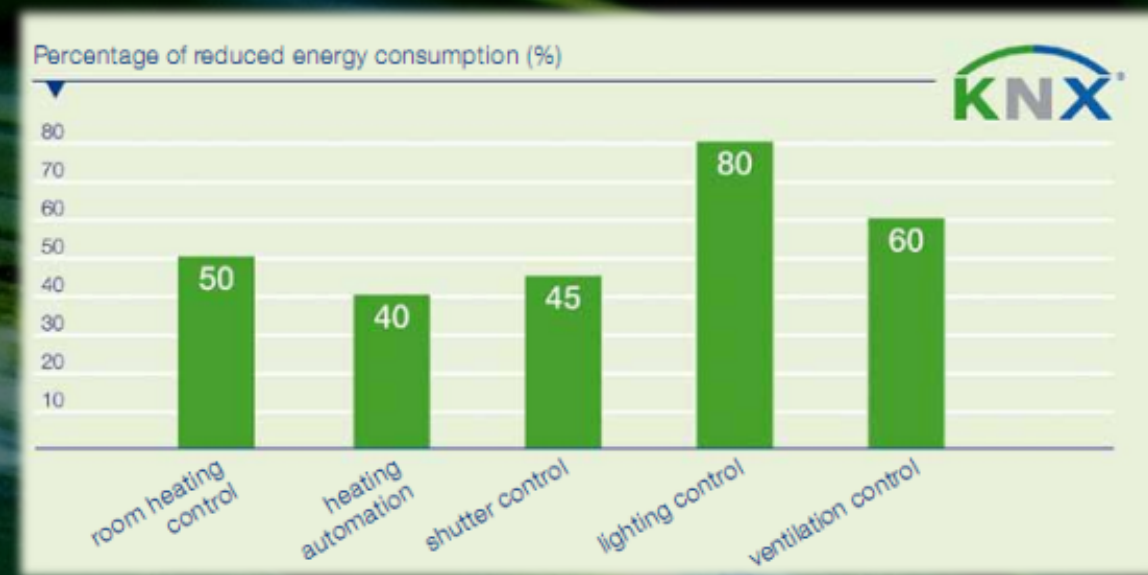
Advantages for **hotel owner**

By implementing this intelligent engineering technology, hotel owner gets **smaller energy bills** and gains **remote monitoring and control** possibilities



Cost optimization throughout the **entire lifecycle** of your project

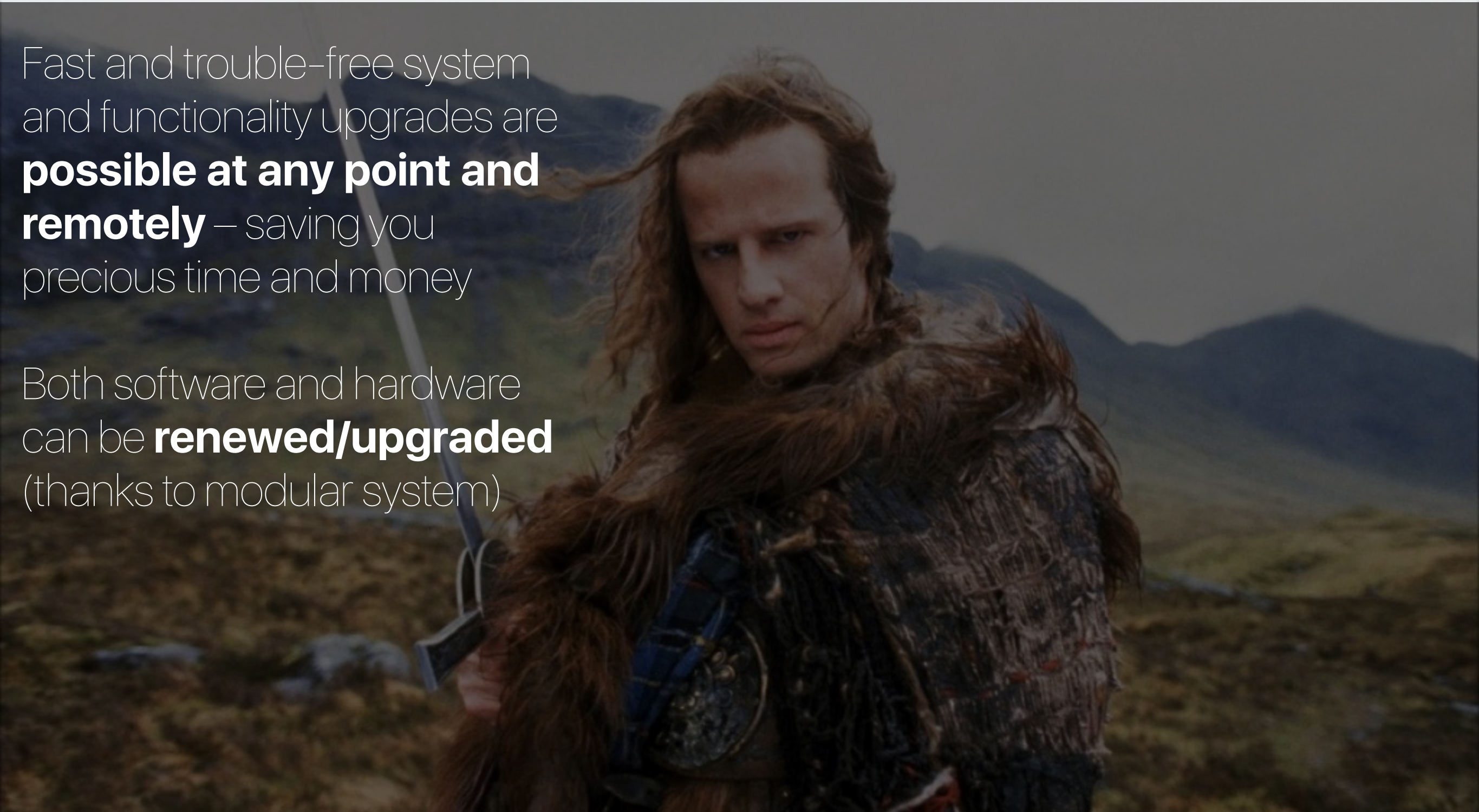
Energy savings can reach up to 50%, which makes **payback period for the solution 2-3 years**



Life-cycle of the hotel **is expanded** due to excess functionality

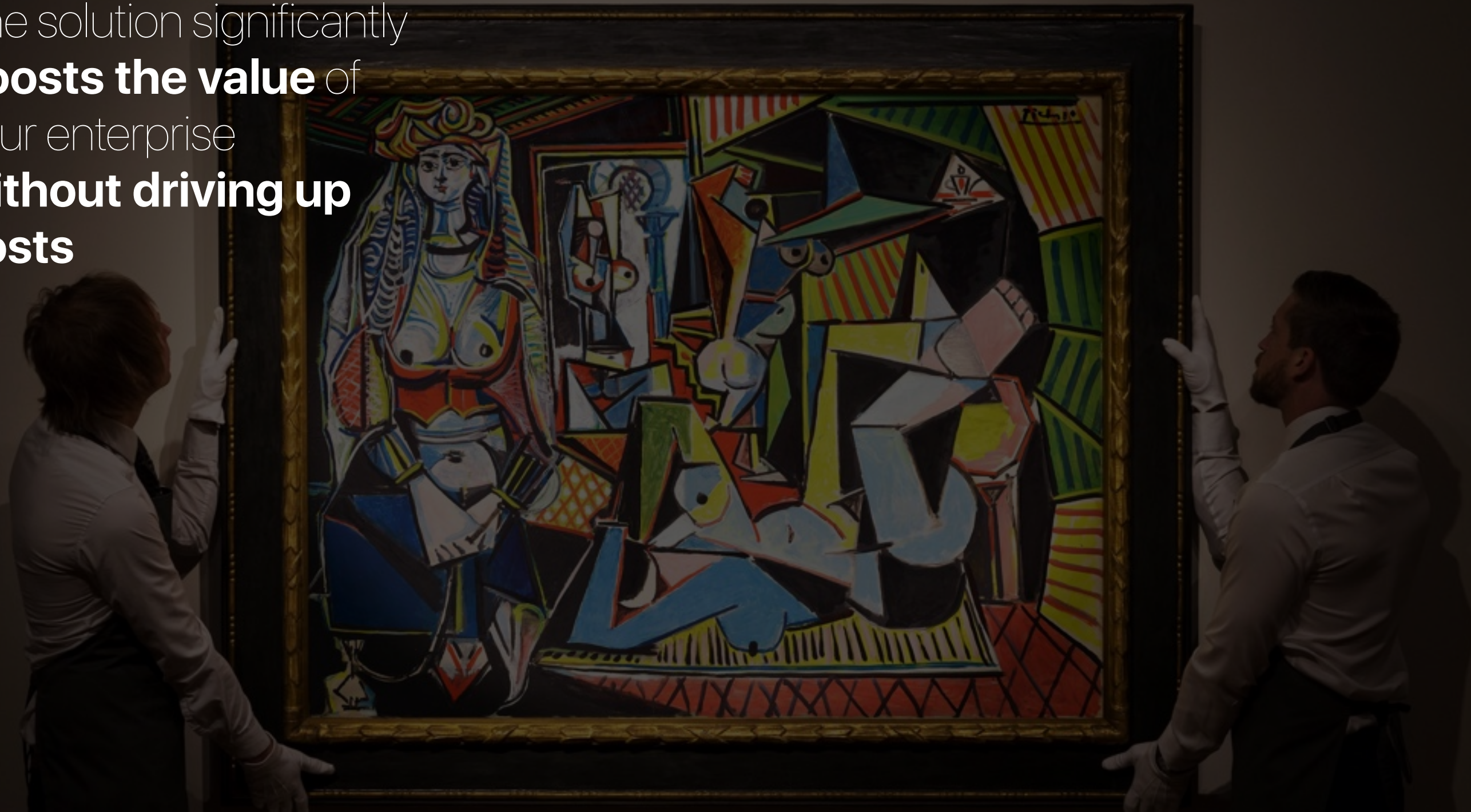
Fast and trouble-free system
and functionality upgrades are
**possible at any point and
remotely** – saving you
precious time and money

Both software and hardware
can be **renewed/upgraded**
(thanks to modular system)



Liquidity of the hotel is
very high

The solution significantly
boosts the value of
your enterprise
**without driving up
costs**



Higher class for your hotel

Thanks to technologies and features that LogicMachine solution brings to the hotel and guests, **your hotel is ranked more higher and its room prices can be increased** in comparison with regular hotels



Care of your **guest** **health**

With Air quality sensor we
can **inform or**
automatically adjust
ventilation depending on
CO, CO₂ or other excessive
gases

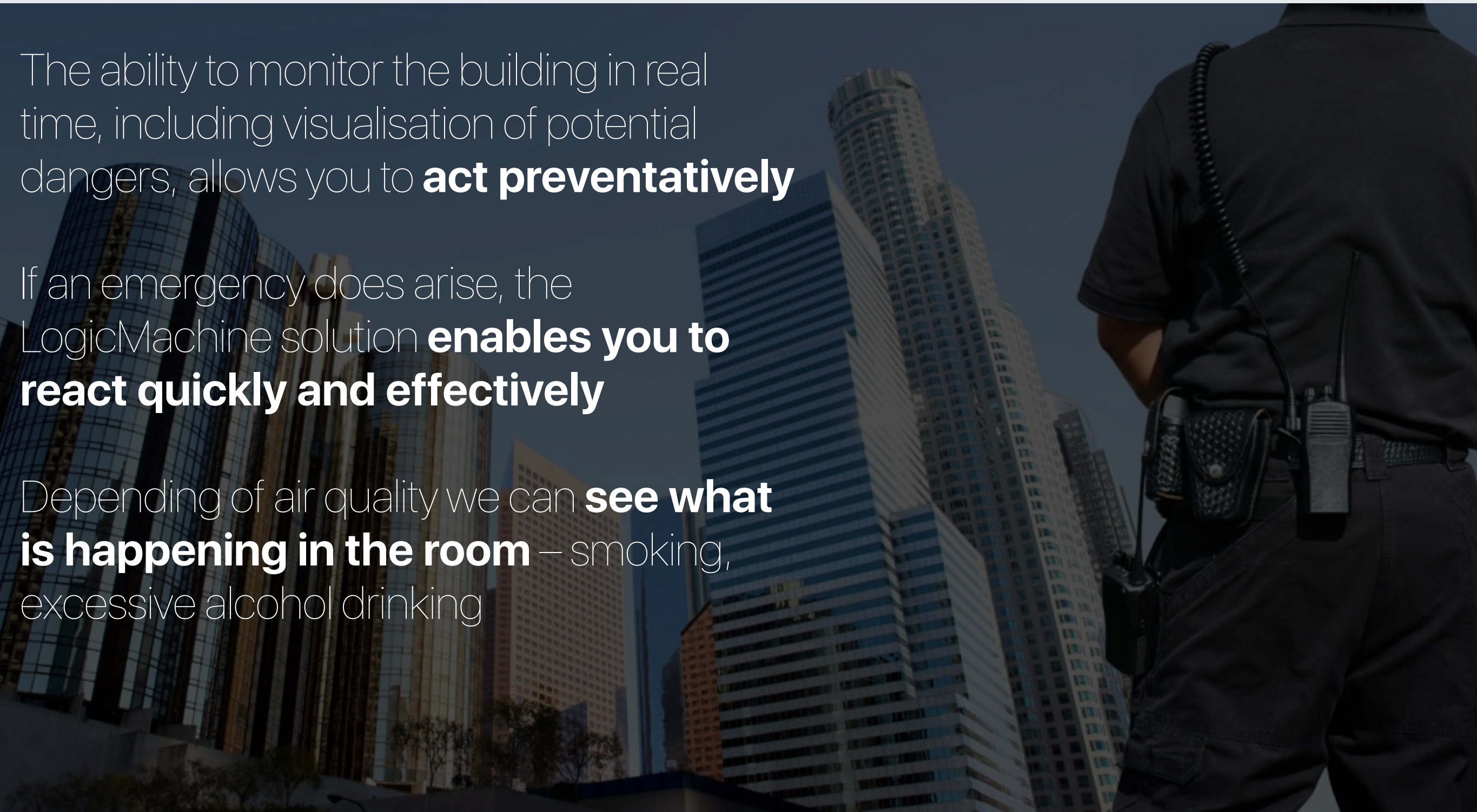


Safety in the hotel room

The ability to monitor the building in real time, including visualisation of potential dangers, allows you to **act preventatively**

If an emergency does arise, the LogicMachine solution **enables you to react quickly and effectively**

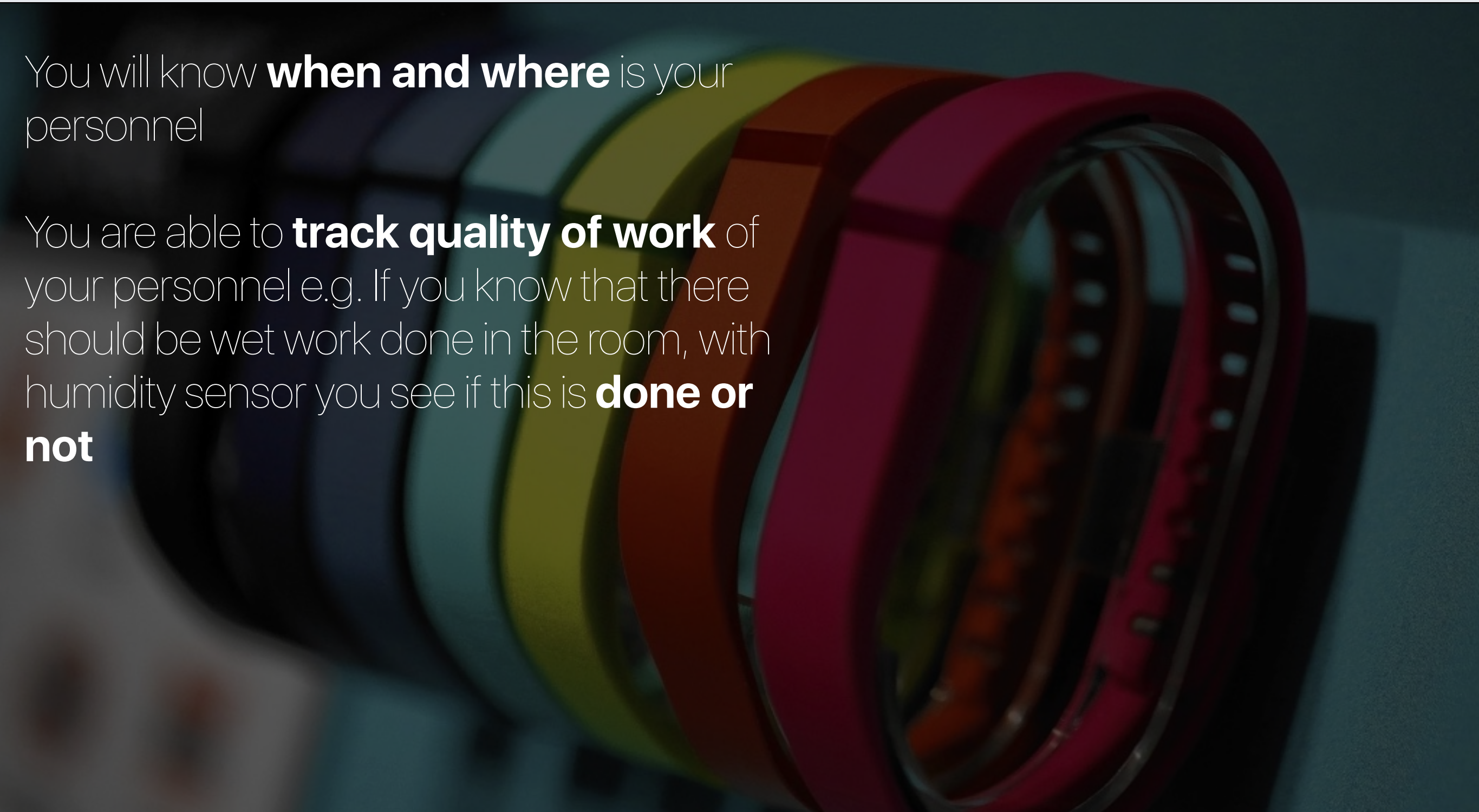
Depending of air quality we can **see what is happening in the room** – smoking, excessive alcohol drinking



Personnel tracking with **wearables**

You will know **when and where** is your personnel

You are able to **track quality of work** of your personnel e.g. If you know that there should be wet work done in the room, with humidity sensor you see if this is **done or not**



Advantages for **guests**

Guests get **full control of their rooms**
over mobile phone, higher comfort and
well-being level



For each guest a **mobile cabinet** is created where he can see

Check-out time

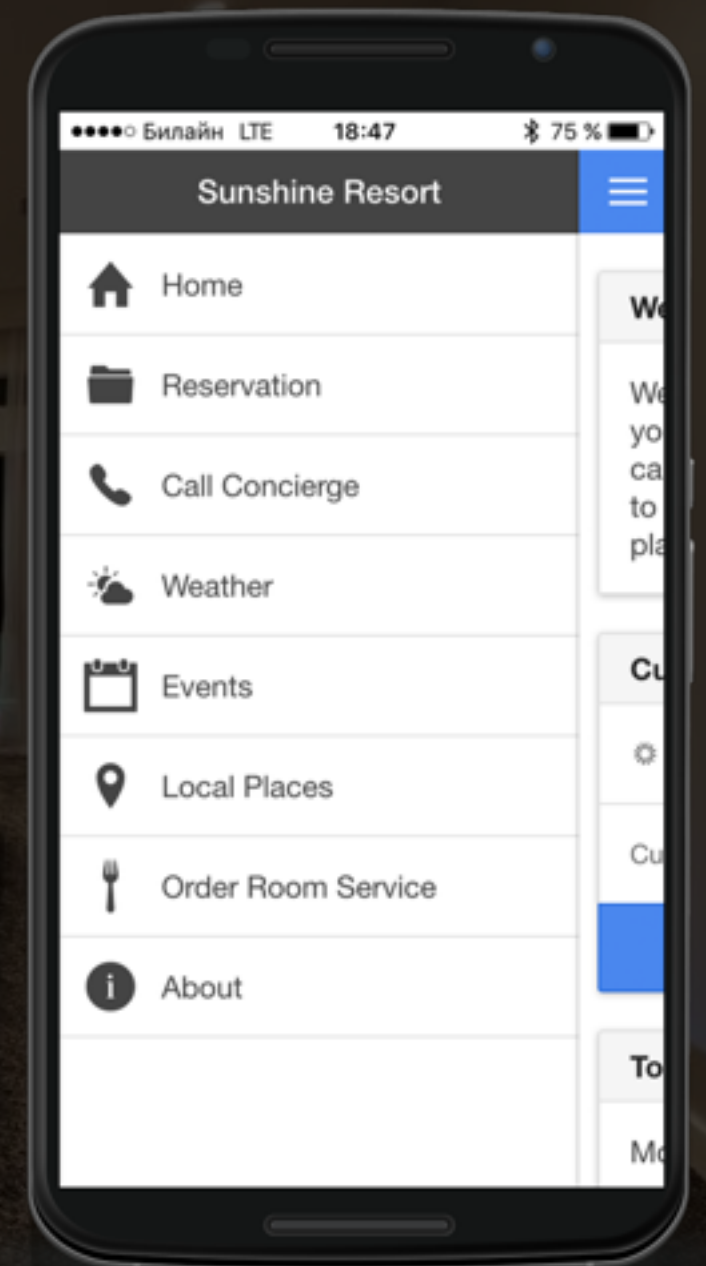
List of ordered **services**

Local city **map and activities**

Messaging possibilities with concierge

Control of room lighting, climate, blinds, music etc.

Service request – make up room, do not disturb, wake up, call taxi



All room **at the touch** of fingertip

Either it is lighting, temperature,
music, blinds – **everything**
can be controlled from one
central point, either it is
guest's mobile phone or tablet



Climate

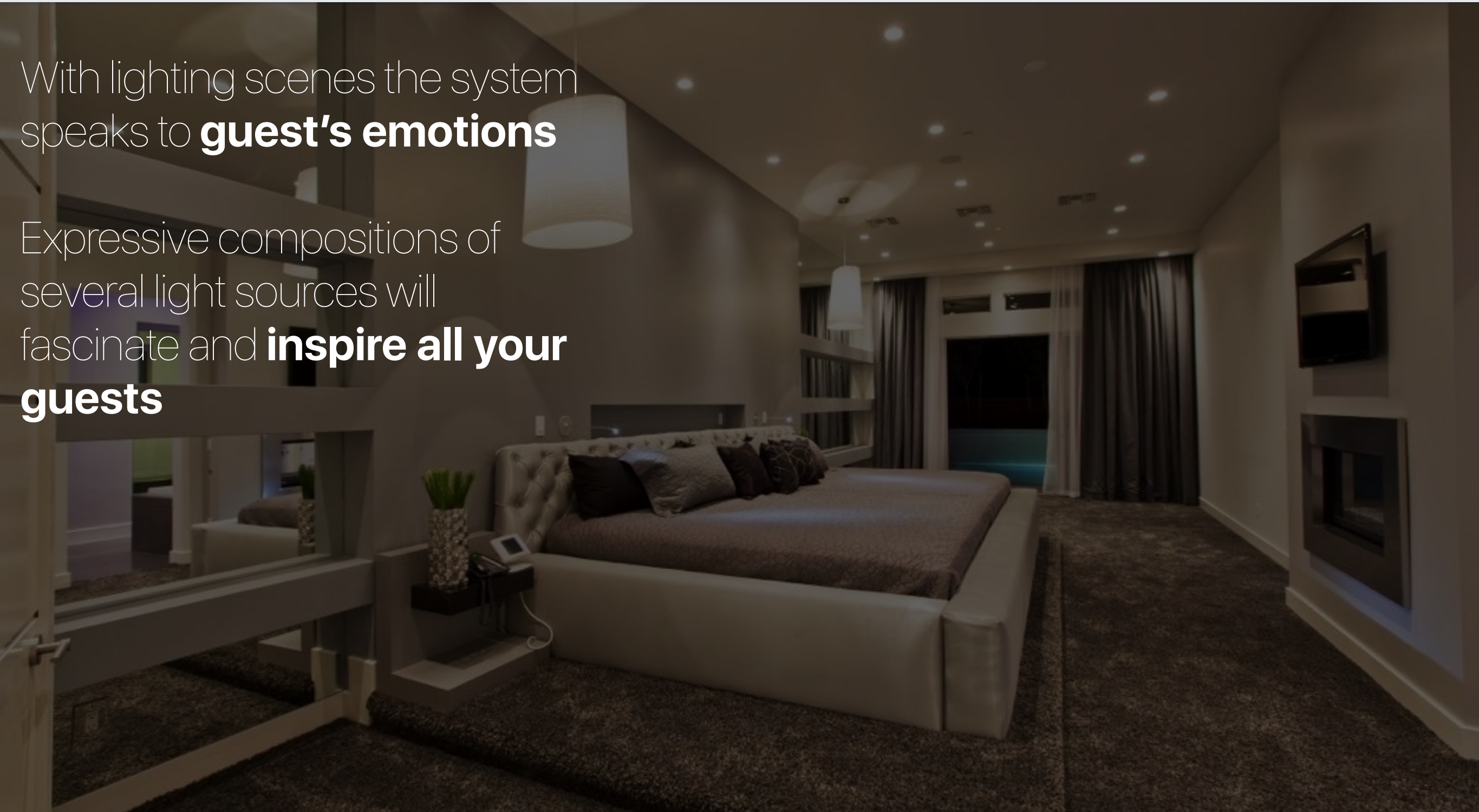
Either cozy and warm or fresh and cool, the right room environment is a key factor in making sure your **guests feel like at home**

LogicMachine solutions understands the challenges of this task and controls heating, ventilation and air conditioning – **individually, conveniently and energy efficiently**

Atmosphere **on demand**

With lighting scenes the system speaks to **guest's emotions**

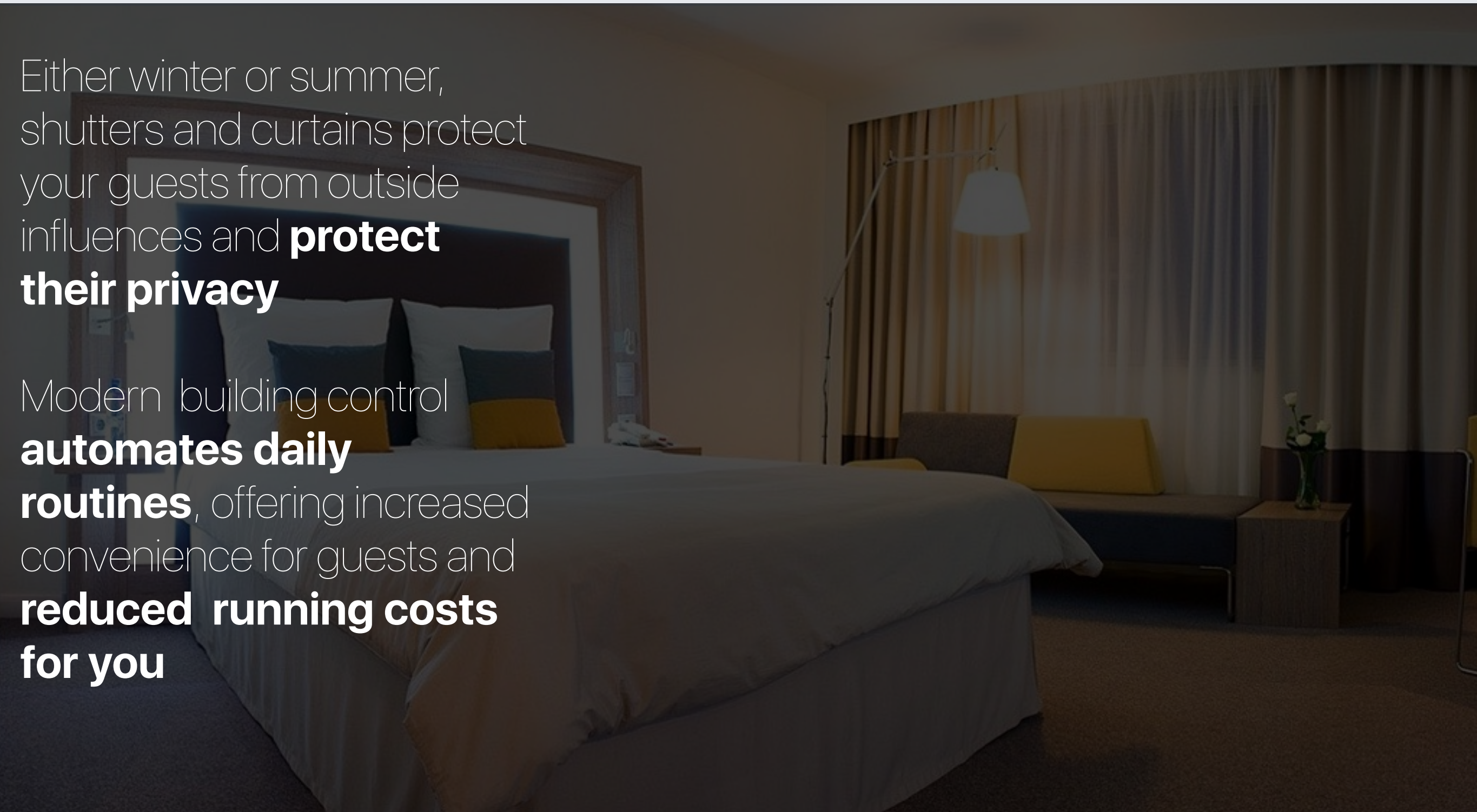
Expressive compositions of several light sources will fascinate and **inspire all your guests**



Protection from outside influences and privacy

Either winter or summer, shutters and curtains protect your guests from outside influences and **protect their privacy**

Modern building control **automates daily routines**, offering increased convenience for guests and **reduced running costs for you**



Service at your **fingertip**

Not only your guests can inform you of their wishes, you can **remain in continuous contact with the room** at all times

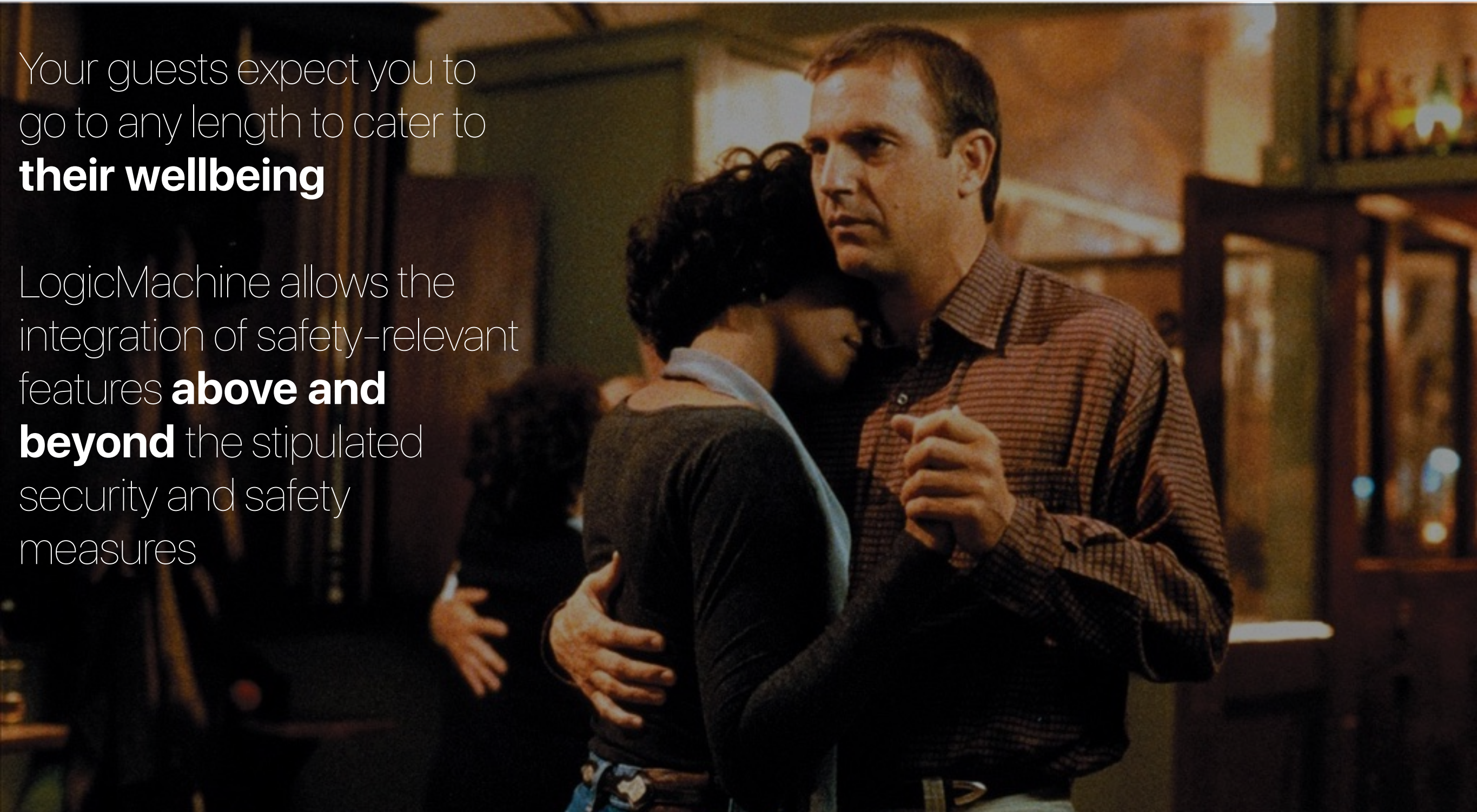
Automatic system messages to hotel service staff allow you to **make the ideal preparations** for a friendly reception of your guests and much more



Security and **safety**

Your guests expect you to go to any length to cater to **their wellbeing**

LogicMachine allows the integration of safety-relevant features **above and beyond** the stipulated security and safety measures



LogicMachine

Solutions



LogicMachine **Re:actor**

24 I/O ports

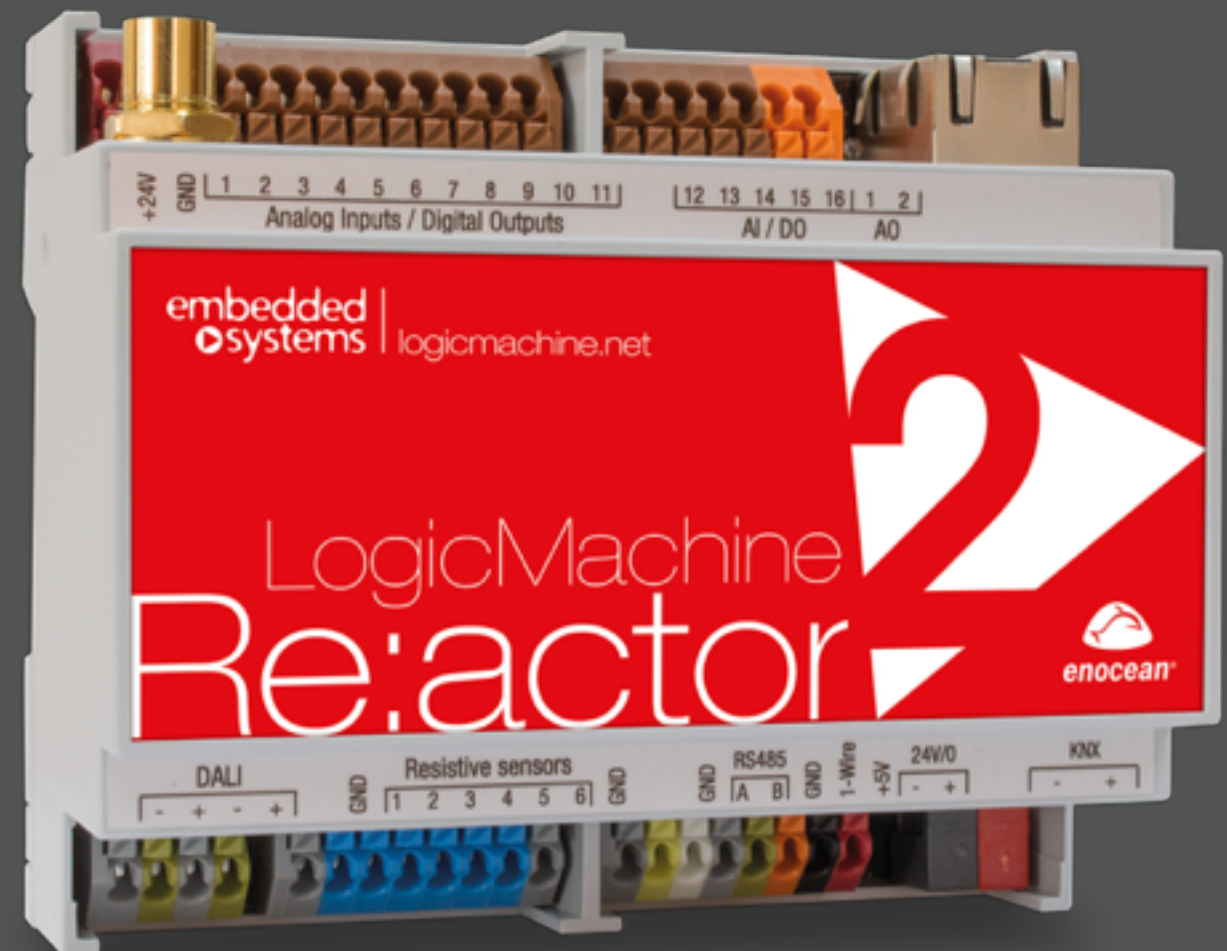
Unlimited **scenario and logic engine**

Unlimited **visualization platform** for PC and for touch devices

Gateway and uniform way of control of different standards – KNX, EnOcean, DALI, ModBus, BACnet, Bluetooth etc.

Object logging with trends support and data exporting to external servers

Integration possibility with Fidelio over XML



LogicMachine **Re:actor Lite**

34 I/O ports with web configuration (no external software required)

Unlimited **scenario and logic engine**

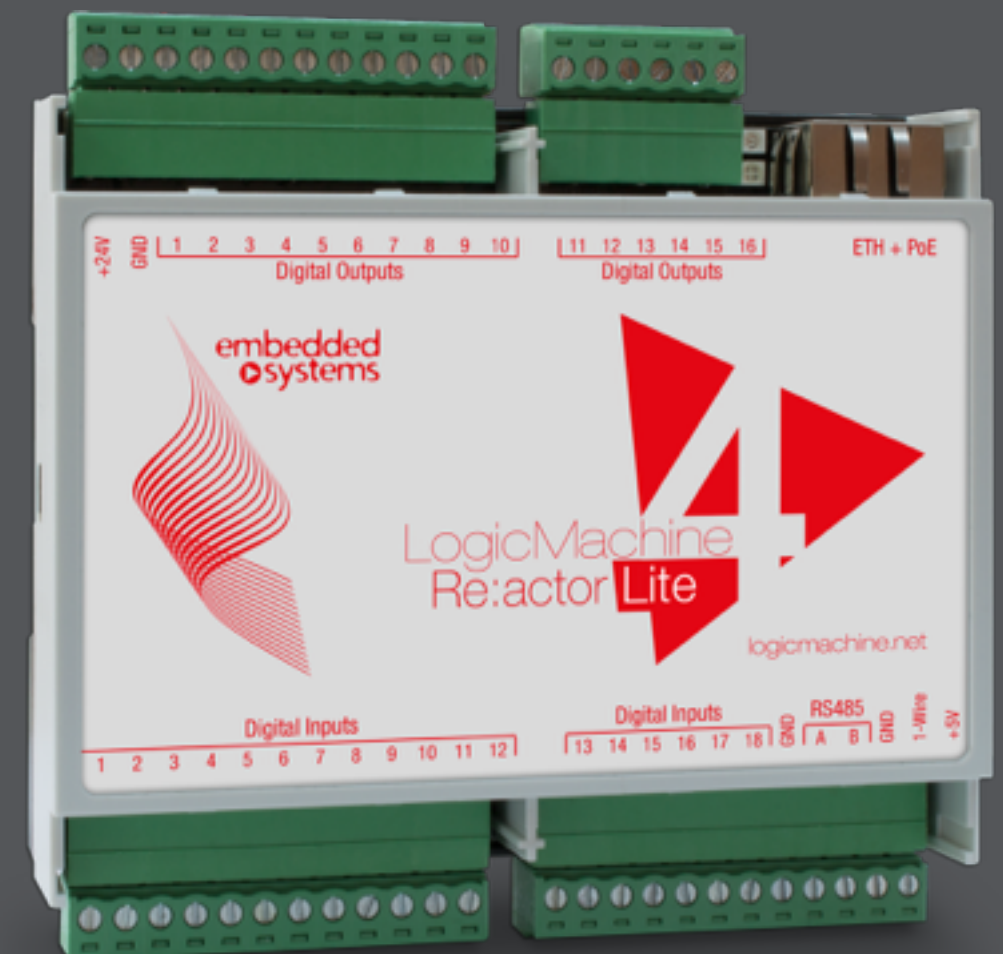
Unlimited **visualization platform** for PC and for touch devices

KNXnet/IP, BACnet IP, ModBus TCP and other IP technologies **on-board**

Powering through **Power-over-Ethernet**

Object logging with trends support and data exporting to external servers

Integration possibility with Fidelio over XML



LogicMachine **Ambient**



Sensors

VOC for control of air quality

Air Quality – with greater CO part than VOC (it can be used where there are CO sources like ovens)

Temperature which allows to make smart thermostat

Humidity

Barometer



Ambient light sensor with light spectrum sensor

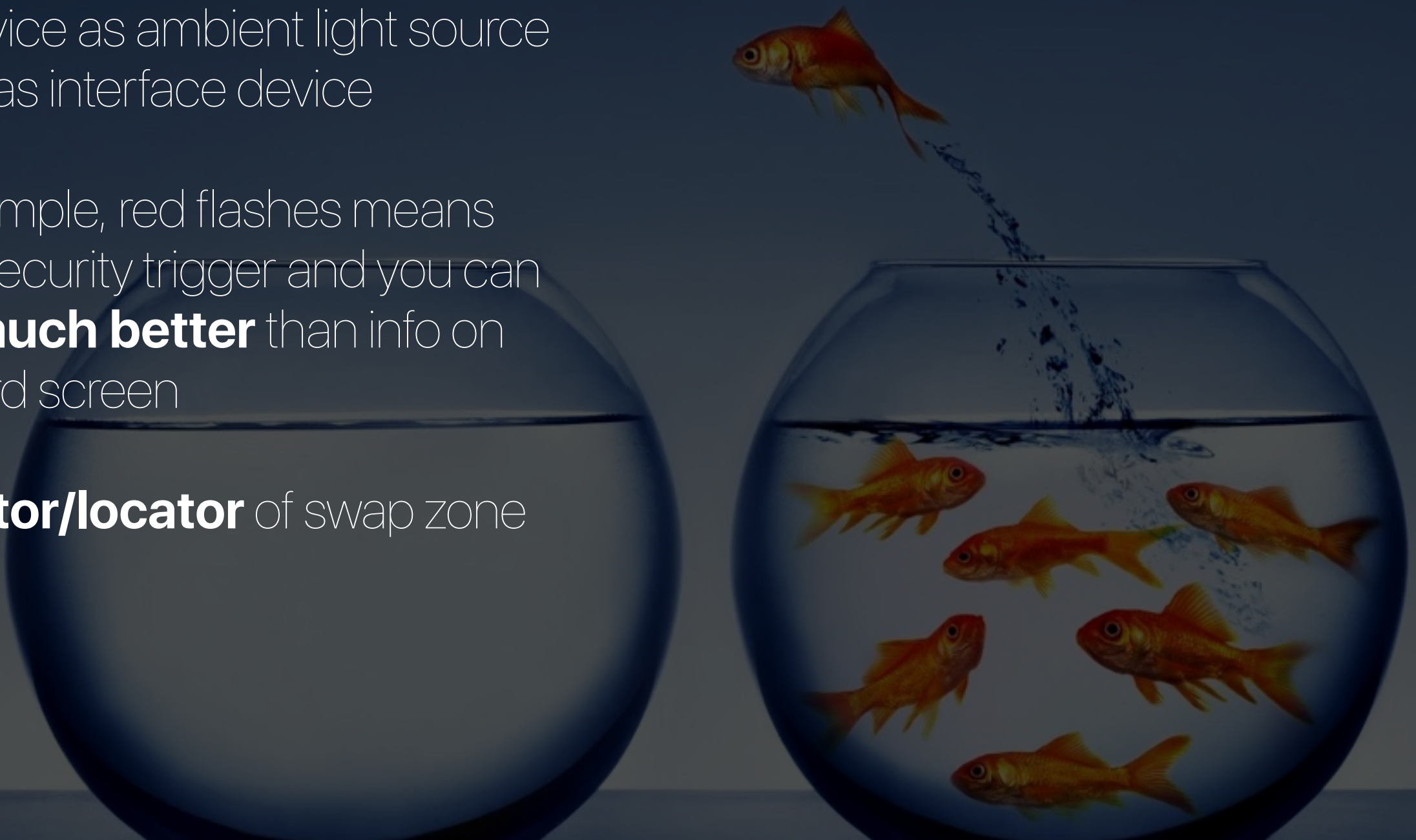
Gesture control (swipe right/left, up/down, front in/out; works starting from 20cm)

Out **interfaces**

RGB LED lighting which allows to use device as ambient light source as well as interface device

For example, red flashes means some security trigger and you can see it **much better** than info on standard screen

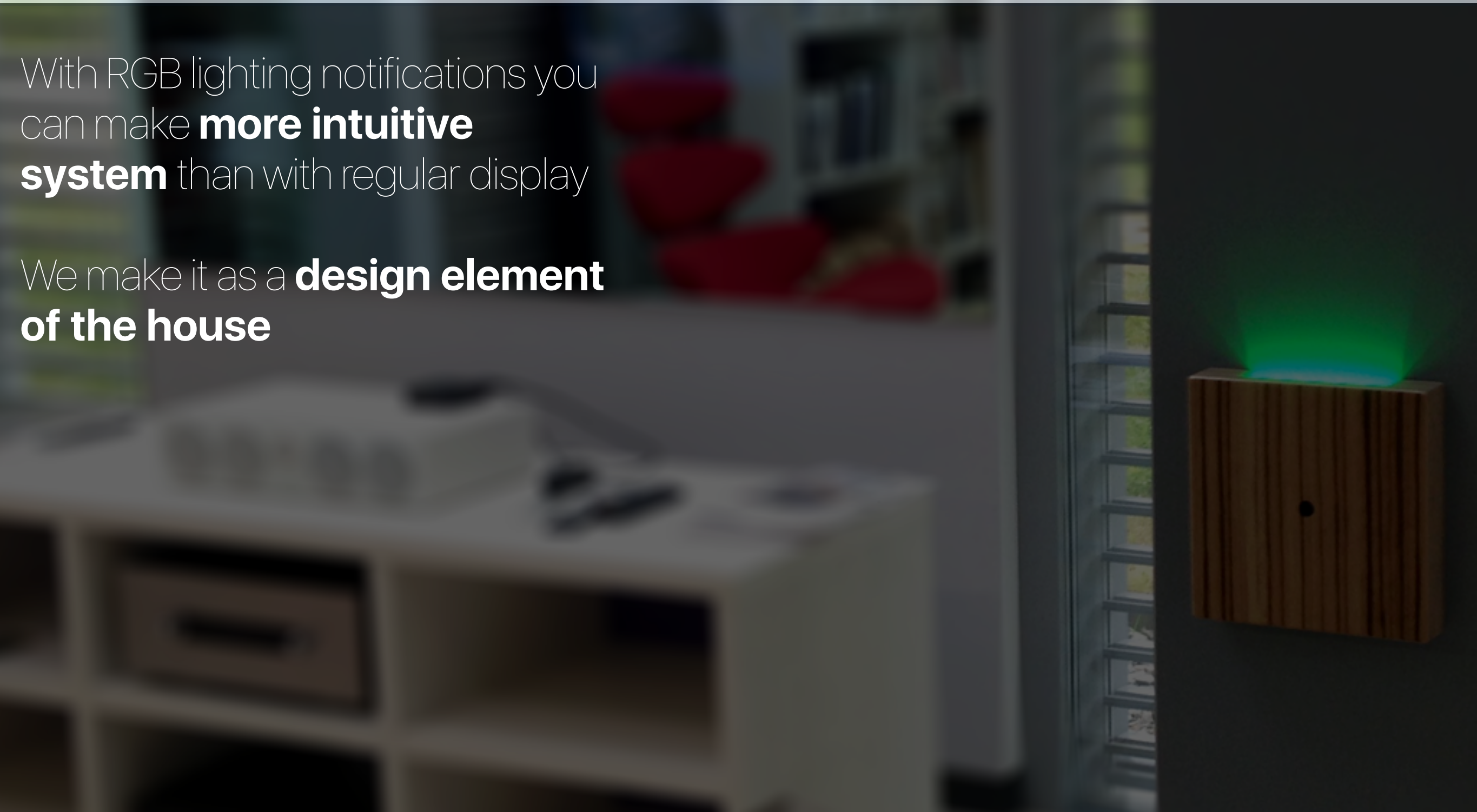
Indicator/locator of swap zone



Best interface is **absence of interface**

With RGB lighting notifications you can make **more intuitive system** than with regular display

We make it as a **design element of the house**



Communication interfaces

Ethernet with PoE powering

(all major standard supported like KNX IP, ModBus TCP, BACnet etc.)

Bluetooth in two modes

1-Wire for I/O extension and temperature sensor connection

Optional: WiFi through USB stick, EnOcean, Z-Wave



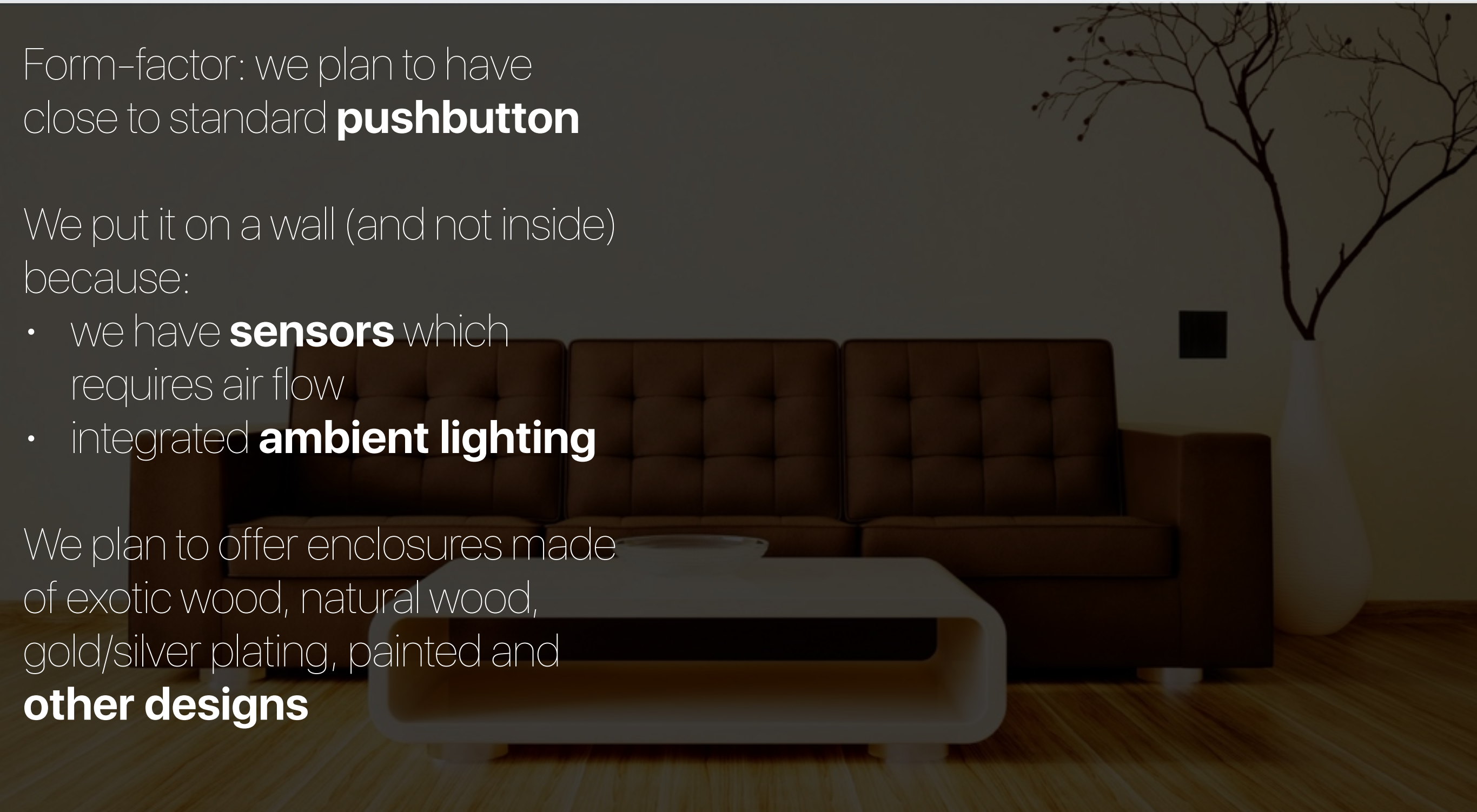
Design

Form-factor: we plan to have close to standard **pushbutton**

We put it on a wall (and not inside) because:

- we have **sensors** which requires air flow
- integrated **ambient lighting**

We plan to offer enclosures made of exotic wood, natural wood, gold/silver plating, painted and **other designs**



Different enclosures



Lets build the right future **together**

info@openrb.com

logicmachine.net

#poweredbylogicmachine

 /logicmachine