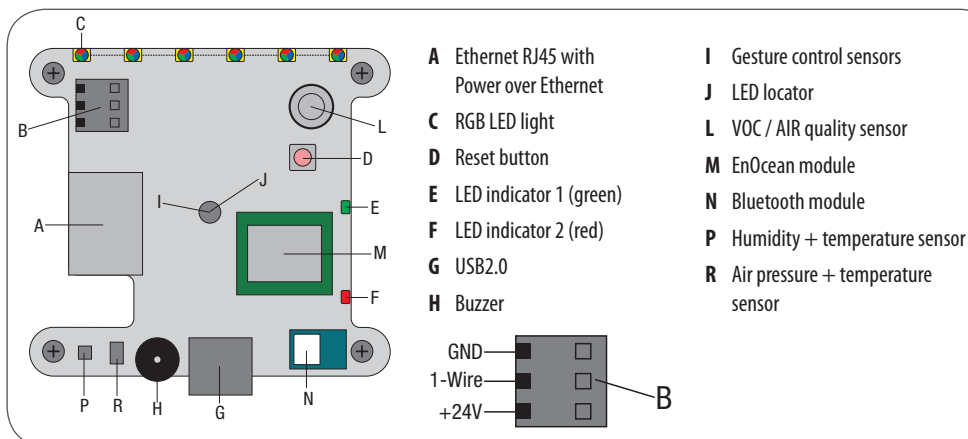


## Operating instructions



LogicMachine Ambient

## Connections and operating elements



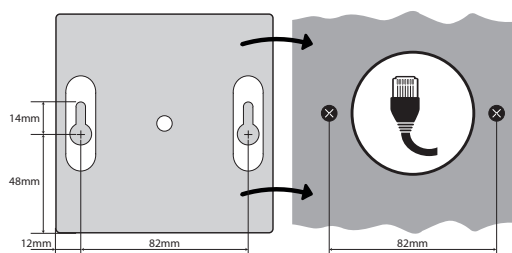
## About

LM Ambient is an ecodesigned wall-mounted controller with gesture control that transforms the device into smart push-button. Temperature, humidity, barometer, air quality and light sensors measure and control environment around you. Ambient lighting can work as LED lamp or noticator. LM Ambient consists of sensor platform, visualization server, cross-standard gateway, scenarios and logic engine. It supports KNXnet/IP, Modbus TCP and BACnet. It also has built-in bi-directional EnOcean, Bluetooth 4.0 Low Energy interfaces. LM Ambient provides ecosystem for IoT including pairing with wearable electronics, platform for custom applications and external development possibilities.

### Applications:

- Gateway
- Presence monitoring
- Smart thermostat
- Gesture push-button
- Sound / light / wearable notification center
- HVAC
- Universal controller (lighting, shutters etc.)
- Health / activity monitoring
- Security
- Application server
- Internet-of-Things / Cloud integration

## Mounting on the wall



1. Drill two holes in the wall Ø 5.5 mm. The distance between holes is 82 mm.
2. Insert nylon plugs in the wall, then insert screws.
3. Prepare Ethernet cable to be connected. We recommend to use a regular wall-mounting box.
4. Attach Ethernet/PoE cable to the device (either from EMBS Ethernet Switch outputs or from passive PoE adapter). If you use a regular 24V DC power supply, connect it accordingly to power input clamps.
5. Place the device on the wall.

## Included in the kit

- 1 x LM Ambient with an ecodesign wooden enclosure
- 1 x 1.5 m Ethernet cable
- 2 x wall screws Ø 3.5 mm, length 30 mm
- 2 x nylon plugs Ø 3.5 – 6 mm, length 30 mm
- 1 x 24V DC power supply with PoE (optional)

## Caution



### Security advice

The installation and assembly of electrical equipment may only be performed by skilled electrician. The devices must not be used in application that can result danger of people, animals or real value.

### Electrical connection

The devices are constructed for the operation of protective low voltage (SELV), Grounding of the devices is not needed. When switching the power supply on or off, power surges must be avoided.

## Technical data

Power voltage	12-24V DC via Power Over Ethernet or from power supply
Power consumption (idle)	2 W
LED indicator 1	green
LED indicator 2	red
Length of wall screws and nylon plugs	30 mm
Supported diameter of wall screws	3.5 – 6 mm

Operation	-5°C to 45°C
Max. humidity	93%, no condensation
Type of protection	IP 20
Dimension (WxHxD)	107 x 107 x 22 mm

## Default network configuration

Login name	admin
Password	admin
IP address	192.168.0.10
Network mask	255.255.255.0

These settings can be changed in  
 System config → Network → Interfaces, by clicking on LAN

Interface	1x 10BaseT/100BaseTX	All
	1x USB2.0	All
	1x EnOcean 868MHz	LMWE00, LMWE02
	1x Bluetooth 3.0 and 4.0	All
	1x 1-Wire	All
	1x Reset push button	All
	1x Buzzer	All
	1x IR Blaster (optional)	All
	1x RGB light	All
	1x Gesture control sensor	All
	1x Humidity sensor	All
	1x Temperature sensor	All
	1x Air quality / VOC sensor	LMWN02, LMWE02
	1x General air quality sensor	LMWN00, LMWE00
	1x Barometer	All
	1x Ambient light sensor	All

### Ordering code sample

LMW X OX XX

- |   |    |                     |
|---|----|---------------------|
| 1 | N  | Without EnOcean     |
|   | E  | With EnOcean        |
| 2 | 02 | Air quality / VOC   |
|   | 00 | General air quality |
| 3 | ZR | Zebrano Radial      |
|   | BL | Black Lacquer       |
|   | WL | White Lacquer       |
|   | OT | Oak Tangential      |

## Status LEDs, RESET button

Procedure		LED 1 status (green)	LED 2 status (red)
Device starting		Green steady ON	Off
Operating device		Off	Off
Rebooting device	Press RESET < 10 sec.	Off	Steady red
Temporary settings of default IP	Press RESET > 10 sec. then	Off	Blinking Red
	Press RESET < 10 sec. or select System config → System → Reboot		
Factory settings of default IP, passwords, project deleted		Off	Flashing Red

## Recycling

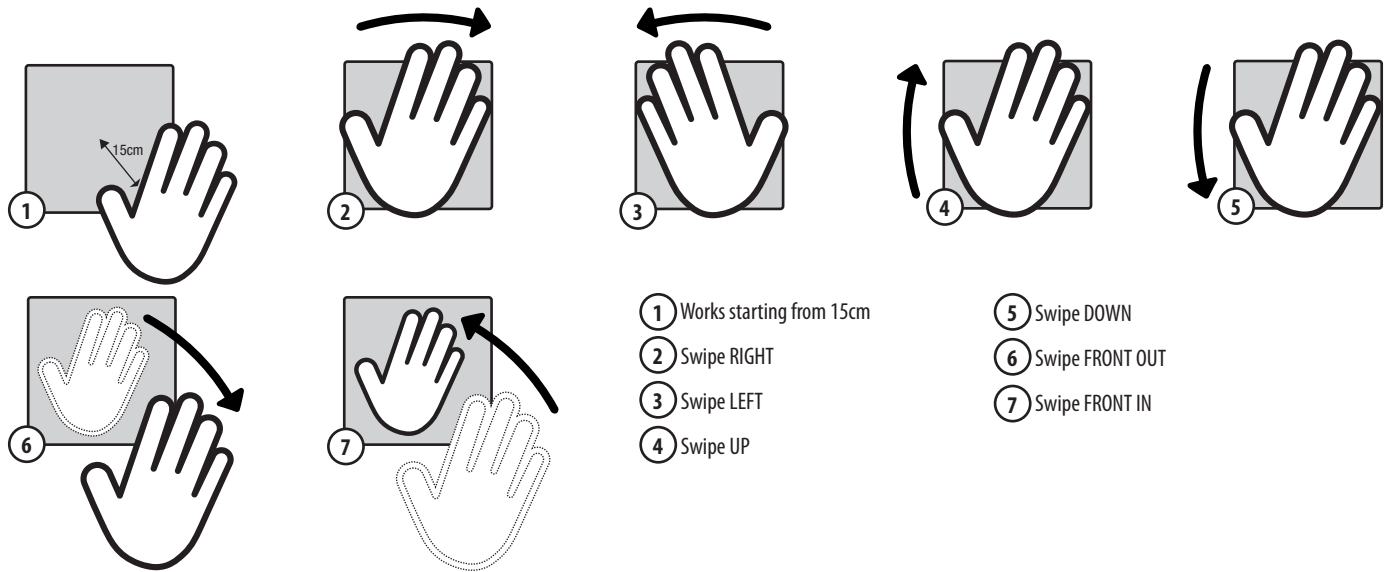


This products falls within the scope of Waste Electrical & Electronic Equipment Directive 2002/96 EC (WEEE). This product should not be disposed of with household waste. Please recycle where facilities exist.

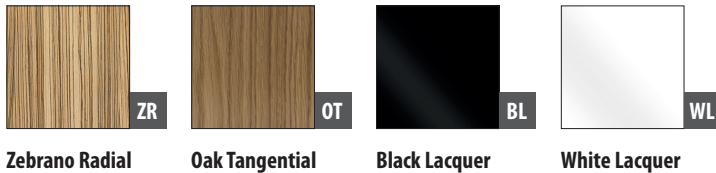
## Support

If you have any technical questions, please contact us by writing to [support@openrb.com](mailto:support@openrb.com) or look in Examples/FAQ sections at [www.logicmachine.net](http://www.logicmachine.net)

## Gesture control



## Basic variations of wooden enclosures



## Custom variations of wooden enclosures



More types of wood and colors available by request. 3D files of the enclosure are available at [www.logicmachine.net](http://www.logicmachine.net)

## Companion products

### Power and infrastructure:



5-port PoE Ethernet switch with QoS



24V power supply with PoE

### I/O extension:



1-wire 2 Universal I/O PUZZLE



LogicMachine Re:actor Lite

For other companion products please see our website at [www.logicmachine.net](http://www.logicmachine.net)